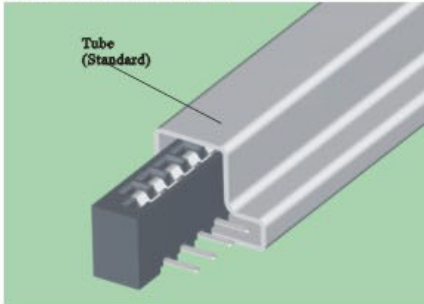


2.54mm FPC Connector

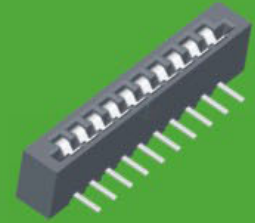
SPECIFICATIONS



Current Rating: 1.0AMP
 Contact Resistance: 30m Ω Max.
 Insulation Resistance: 1000M Ω Min.
 Withstanding Voltage : 200V AC/Minute
 Operation Temperature: -40°C to +80°C
 Contact Material: Phosphor Bronze
 Contact plating: Tin Plated
 Insulator Material: Polyester (UL94V-0)
 StandArd: PBT+30%GF



5110-XXSDDNX01



5110-XXRDDNX01



SECTION



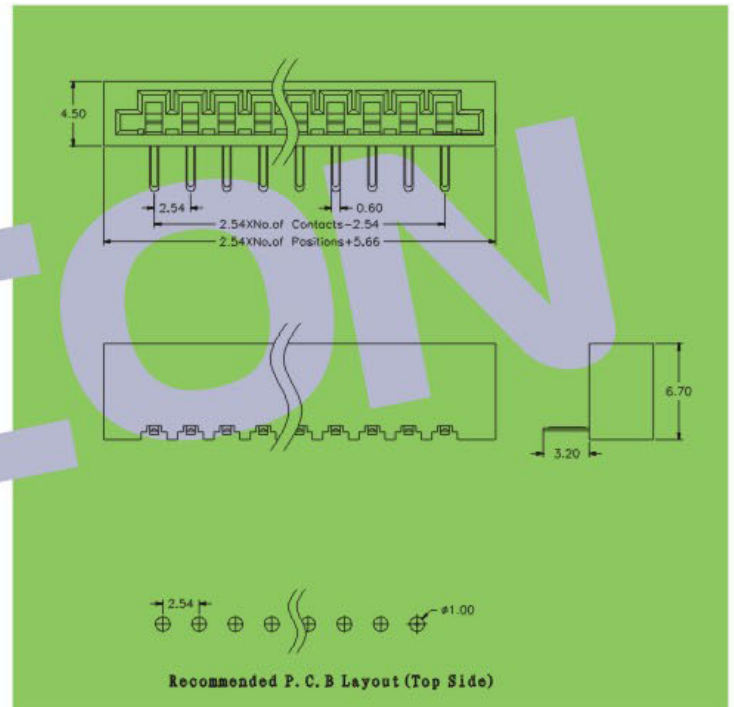
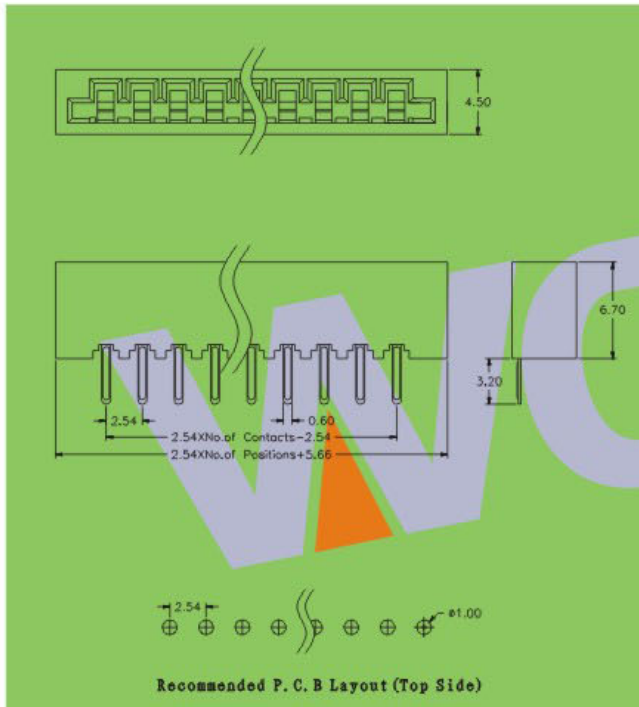
SECTION

5110-XX X D D N X 01

NO. OF PINS
PER ROW
03~30P

CONTACT SHAPE
S: Straight
R: Right Angle

INSULATOR COLOUR
B: Black W: White
E: Beige A: Brown



※ INNOVATION AND DEVELOPMENT ※ CONTINUAL IMPROVEMENT ※ QUALITY FOREMOST ※ CUSTOMER SATISFACTION ※

Http:www.wafe-china.com E-mail:sales@wafe-china.com

WAFE DONGGUAN FAX:+86 769 85358915 TEL:+86 769 85358920
 WAFE KUNSHAN FAX:+86 512 57468468 TEL:+86 512 57468418